

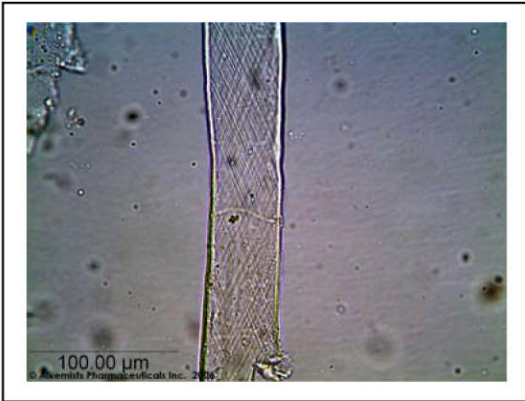
**Certificate Issued To:**  
**Millennium Health Supplements**  
**(Cda) Inc.**  
**38 A King St. E.**  
**Bowmanville, ON L1C 1N2**  
**Canada**



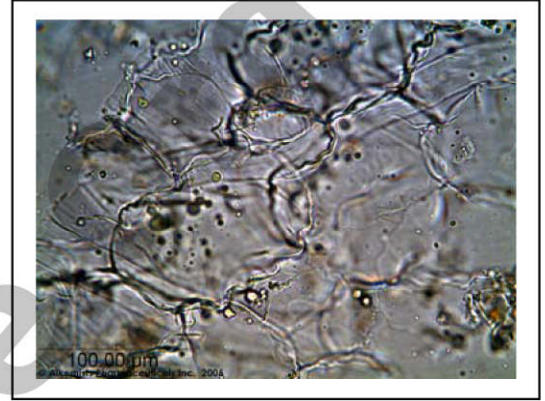
Work performed at:  
**Alkemists Pharmaceuticals Inc.**  
1260 Logan Ave B3  
Costa Mesa, CA 92626  
714-754-HERB (4372)  
714-668-9972 (FAX)  
E-mail: info@alkemist.com  
Web Site: www.alkemist.com

**Certificate of Analysis 3 of 3: Hoodia (060506)**  
**Microscopy with Digital Photo-Documentation**

1



2



Company Name: Millennium Health Supplements (Cda) Inc.  
Title: Hoodia  
Plant Part: aerial part  
Sample Received: 6/7/2006  
Sample Description: ~49g in a zip lock bag  
Source: N/A  
Form of Botanical: crude plant powder  
Appearance: coarse ground green/beige dried plant material  
Lot #: 060506  
Sample #: AU15806MHS  
Reference Sample #: Voucher Specimen AU20604AP; AU15606AHP1, AU19004PHX, AU11004CHR, AU02006NW, AU11805MHS1 Hoodia gordonii (Masson) Sweet ex Decne authenticated by macroscopic, microscopic &/or TLC studies according to the reference source cited below held at Alkemists Pharmaceuticals, Costa Mesa, CA.  
  
Latin Name: Hoodia gordonii (Masson) Sweet ex Decne  
Examiner: EMS  
Magnification: (1) 400X  
Chemical Reagents: (1) acidified chloral hydrate glycerol solution  
Sample Findings: (1) long fiber showing whirled striations  
Magnification: (2) 400X  
Chemical Reagents: (2) acidified chloral hydrate glycerol solution  
Sample Findings: (2) large thin walled parenchyma with wrinkled cell walls  
Reference Source: Method Developed by Alkemists Pharmaceuticals  
USP-PF, Vol. 27(2) [Mar.-Apr. 2001]; Official Methods of Analysis of AOAC, 16<sup>th</sup> Ed.

**Comments & Conclusions:**

This sample is representative of Hoodia gordonii aerial part based on authenticated microscopic references and the consistent characteristic cellular structure of an aerial part as well as the reference cited above. The characteristic cellular structures identified in this sample are the long fiber showing whirled striations seen in micrograph (1) above & in micrograph (2) we see the large thin walled parenchyma with wrinkled cell walls. **These characteristic cellular structures confirm the identity of Hoodia (060506).**

Analyzed by: Élan M Sudberg  
Authorized by: Sidney Sudberg, Director, Alkemists Pharmaceuticals

Report Date: 6/12/2006

This report applies to the sample investigated and is not necessarily indicative of the quality or condition of apparently identical or similar products. As a mutual protection to clients, the public and this laboratory, this report is submitted and accepted for the exclusive use of the client whom it is addressed and upon the condition that it is **NOT** to be used, in whole or in part, in any advertising or publicity matter without prior written authorization from this laboratory.  
© 2006 Alkemists Pharmaceuticals, Inc. All Rights Reserved